
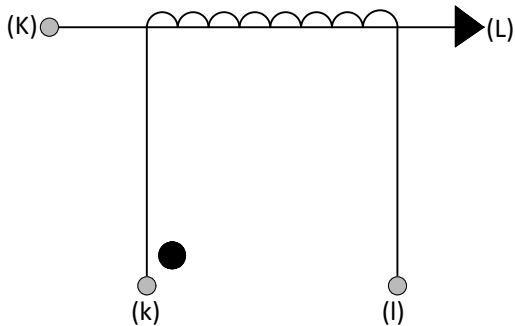


Product Type	Current Transformer	
Amgis Part Number	CX-0500	

SCHEMATIC:

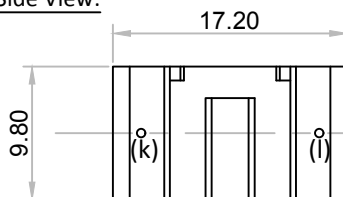


ELECTRICAL SPECIFICATION:

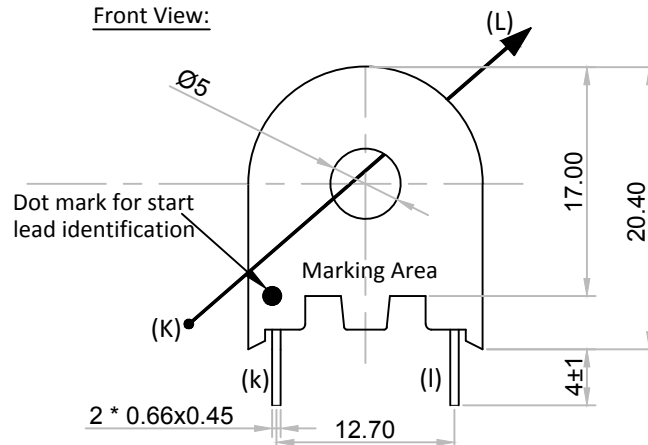
Rated input current	= 5Amps
Operating Frequency	= 50 / 60 Hz
Turns Ratio	= 1 : 500
DC Resistance	= 41 Ω @ 20°C
Primary to Secondary Isolation	= 2500VAC
Operating Temperature	= -40°C to +120°C
Ambient Temperature	= 60ta

MECHANICAL SPECIFICATION:

Pin Side View:



Front View:



MARKING INFORMATION:

AMGIS
CX-0500 wk/yr code

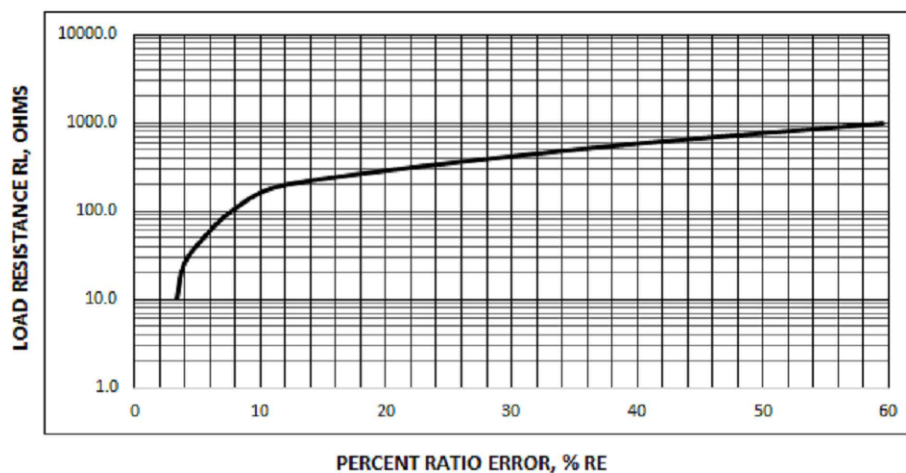
TRAFO WEIGHT:

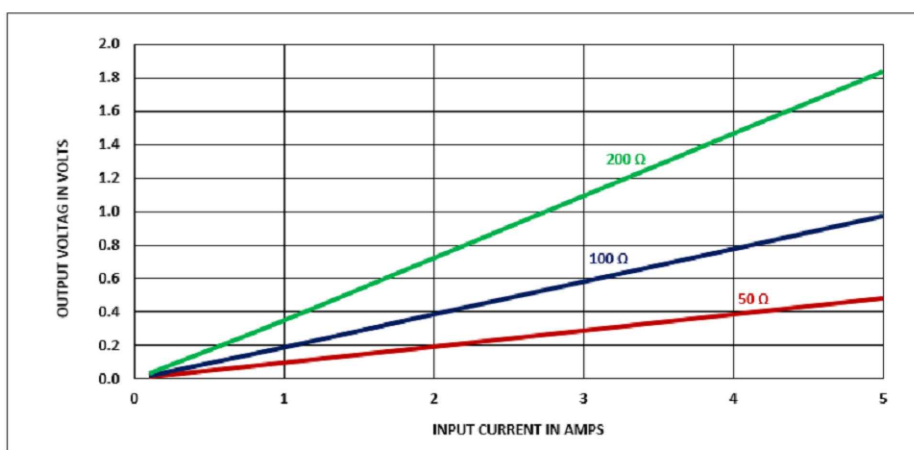
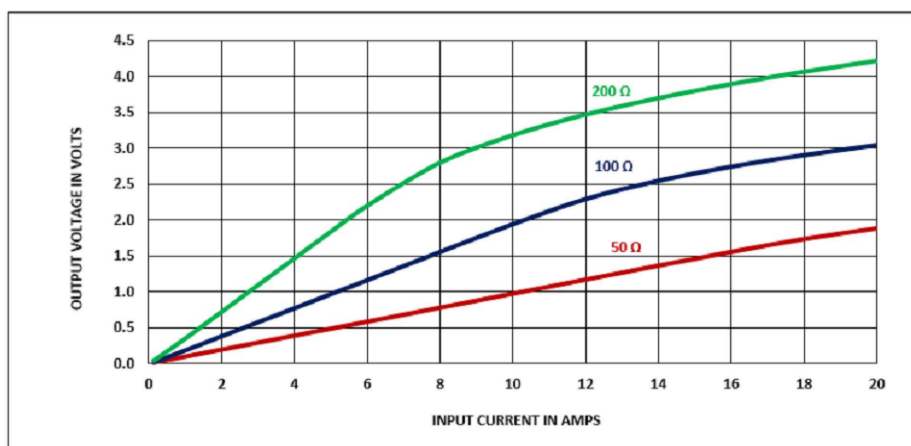
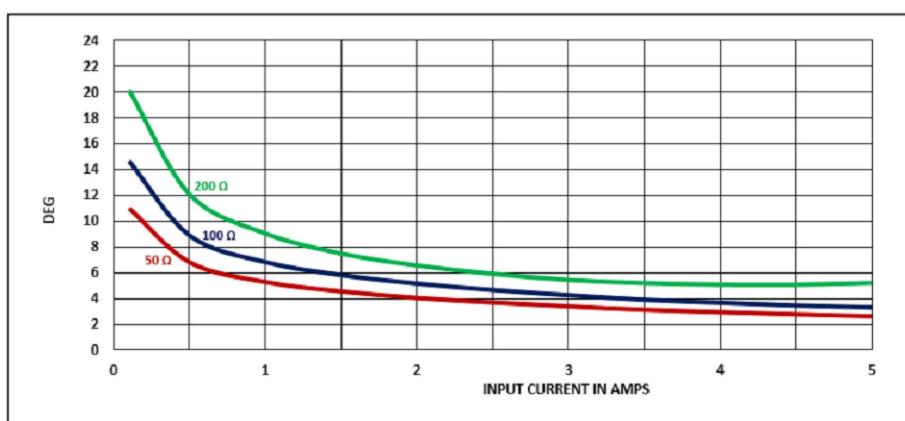
Approx. Weight = 0.014 kg / pc

All dimensions are in mm
Linear dimensional tolerance ± 0.2 mm

RATIO ERROR vs INPUT CURRENT @ RATED BURDEN:

%RE VS RL AT RATED PRIMARY CURRENT @ 5A/50HZ



OUTPUT RESPONSE vs INPUT CURRENT @ RATED BURDEN:SATURATION CURRENT RESPONSE @ RATED BURDEN:PHASE ANGLE RESPONSE vs INPUT CURRENT @ RATED BURDEN:

-----Initial Issue-----	1	000	Perumal.M	J. Castro	05-24-2018
Changes	Issue	Rel	Prepared	Reviewed	Date

Amgis LLC • 10899 Kinghurst St. Ste. 220 • Houston, Texas 77099

Toll free (877)762-6447 • Fax (832)775-1317

Technical: info@amgistoroids.com • Sales: sales@amgistoroids.com • www.amgistoroids.com